

29er South American Championship

April 12-17, 2025

Punta del Este, Uruguay

The Organising Authority is the Yacht Club Punta del Este in conjunction with 29er Uruguay

SAILING INSTRUCTIONS

[NP] denotes a rule that shall not be grounds for protests by a boat. This changes RRS 60.1(a).

[DP] denotes a rule for which the penalty is at the discretion of the International Jury.

[SP] denotes a rule for which a standard penalty may be applied by the race committee without a hearing or a discretionary penalty applied by the International Jury with a hearing.

1. RULES

1.1 The regatta will be governed by the rules as defined in The Racing Rules of Sailing (2025-2028).

1.2 Penalties: In RRS 44.1 "Two-Turns Penalty" is changed to "One-Turn Penalty"

1.3 Appendix P, Special Procedures for Rule 42, shall apply, with RRS P2.1 to P2.3 deleted and replaced by:

P2.1 First and Second Penalty

When a boat is penalized under rule P1.2 for the first or second time during the event, her penalty shall be a One-Turn Penalty under rule 44.2. If she fails to take the penalty she shall be disqualified without a hearing.

P2.2 Third and Subsequent Penalties

When a boat is penalized a third or subsequent time during the event, she shall promptly retire. If she fails to do so she shall be disqualified without a hearing and her score shall not be excluded.

1.4 The Class Rules will apply except for any that are altered by the Notice of Race. The [Class Race Management Guidelines](#)¹ will also apply, but a failure to follow these Guidelines is not on its own grounds for redress. This changes RRS 62.1(a).

1.5 No national authority prescriptions will apply.

1.6 Appendix T shall apply.

¹ Link: <https://29er.org/assets/29erMedia/29er%20RACE%20MANAGEMENT%20GUIDELINES%202024-2.pdf>

2. NOTICES TO COMPETITORS

Notices to competitors will be posted on the official notice board;

<https://viramos.com/championships/482a8646-833e-4fd6-8cf7-ce4f4c4d7550>

3. CHANGES TO SAILING INSTRUCTIONS

Any change to the sailing instructions will be posted not less than 90 minutes before the first warning signal will be made, except that any change to the schedule of races will be posted by 20:00 hours on the day before it will take effect. Up to FOUR races a day may be sailed without the need for a change in Sailing Instructions

4. SIGNALS MADE ASHORE

Signals made ashore will be displayed on the flag poles located at the Yateste building.

5. FORMAT OF RACING

The regatta will consist of only one series. There will be only one fleet and one racecourse, following the L2 format seen in Attachment B.

6. SCHEDULE

6.1 The Championship schedule will be as follows:

Saturday	12th	Race Office open	09:00
		Registration	09:00 - 18:00
Sunday	13th	Registration	09:00 - 18:00
Monday	14th	Skippers Meeting	10:00
		Races	13:00
Tuesday	15th	Races	13:00
		Cocktail Dinner	20:30
Wednesday	16th	Races	13:00
Thursday	17th	Races	11:00
		Prize Giving Ceremony	18:00

6.2 Twelve (12) races are scheduled. Three (3) races are scheduled per day and a maximum of four (4) races can be raced each day.

6.3 On Thursday 17th of April, there will be no warning signal after 16:00.

7. RACING AREA

Attachment A shows the location of the tentative racing area. The exact location will be defined by the Race Committee each day.

8. THE COURSE

- 8.1 The diagram in Attachment B shows the course, including the course signals, the order in which marks are to be passed, and the side on which each mark is to be left. L2 format will be used.
- 8.2 A gate may be replaced by a single mark to be left to port.
- 8.3 Races will not be shortened. This changes RRS 32.

9. MARKS

- 9.1 Marks 1, 2S and 2PYellow
Change mark.....Orange
- 9.2 Starting marks will be the race committee vessel and a Green mark.
- 9.3 Finishing marks will be the race committee vessel and a Green mark.

10. THE START

- 10.1 The starting line will be between staff displaying orange flag on the race committee vessel and a Green mark.
- 10.2 A boat starting later than 4 minutes after her starting signal will be scored Did Not Start without a hearing. This changes RRS A5.1 and A5.2.
- 10.3 To alert boats that a race or sequence of races will begin soon, the orange starting line flag will be displayed with ONE sound signal not less than FIVE minutes before the warning signal is displayed.

11. CHANGE OF THE NEXT LEG OF THE COURSE

To change the next leg of the course, the race committee will lay a new mark and remove the original mark as soon as practicable. When in a subsequent change a new mark is replaced, it will be replaced by an original mark.

12. THE FINISH

The finishing line will be between the staff displaying a blue flag on the race committee vessel and the nearby finishing Green mark.

13. TIME LIMITS AND TARGET TIMES

- 13.1 Time limits and target times are as follows:

Time limit	Target time
45 minutes	30 minutes

- 13.2 If no boat sails the course and finishes within the time limit the race will be abandoned. Failure to meet the target time will not be grounds for redress. This changes RRS 62.1(a).
- 13.3 Boats failing to finish within 15 minutes after the first boat sails the course and finishes will be scored Did Not Finish without a hearing. This changes RRS 35, A5.1 and A5.2.

14. PROTESTS AND REQUESTS FOR REDRESS

- 14.1 Protests, requests for redress or reopening, scoring enquiries, equipment changes, crew changes and general enquiries shall be made within the appropriate time limit (where appropriate).
- 14.2 The protest time limit for each course area is 60 minutes after the last boat has finished the last race of the day on that day, or the race committee signals no more racing today, whichever is later. However, the protest time limit is 30 minutes after the signal AP over A is displayed ashore.
- 14.3 Notices will be posted no later than 30 minutes after the protest time limit to inform competitors of arbitration meetings and hearings in which they are parties or named as witnesses. These meetings and hearings will be held in the protest room, next to the Race Office.
- 14.4 Decisions of the jury will be final as provided in RRS 70.5.

15. ARBITRATION

Appendix T shall apply.

16. SCORING

- 16.1 THREE races are required to be completed to constitute a regatta
- 16.2 The Low Points Scoring System of RRS Appendix A will apply.
- 16.4 Discards;
 - a) When five (5) races or fewer have been completed, a boat's series score is the total of her race scores.
 - b) After six (6) races are completed, a boat's series score is the total of her race scores excluding her worst score.
 - c) If twelve (12) races are completed, a boat's series score will be the total of her race scores excluding her two (2) worst scores.

16.5 Scoring Queries

To request correction of an alleged error in posted race or series results, a boat shall complete a scoring enquiry form available on the website.

16.6 Resolving Ties

Ties will be broken in accordance with RRS A8.

17. SAFETY REGULATIONS [DP][NP][SP]

- 17.1 Boats not leaving the shore for the day's races shall notify the race office or race committee as soon as possible.
- 17.2 A boat that retires from a race shall notify the race committee as soon as possible.
- 17.3 RRS 40.1 applies at all times whilst afloat.
- 17.4 Under all circumstances coaches and other support boats are expected to assist any boat in distress.
- 17.5 Channel 72 will be used for all VHF communications.

18. REPLACEMENT OF CREW AND EQUIPMENT

- 18.1 Substitution of competitors will not be allowed without prior written approval of the race committee.
- 18.2 Substitution of damaged or lost equipment will not be allowed unless approved by the Technical Committee. Requests for substitution shall be made to the committee at the first reasonable opportunity.

19. EQUIPMENT & MEASUREMENT CHECKS [DP]

- 19.1 [NP] On the water, a boat shall comply with any instruction from the race committee, equipment inspector or measurer to proceed immediately to a designated area for inspection.
- 19.2 Only one set of sails shall be used during the regatta. They shall be presented and registered during the measurement procedure.

20. OFFICIAL VESSELS

Official vessels will be identified as follows:

Race committee vessels.....White flags with CR

Jury vessels.....White flags with JURY

21. SUPPORT VESSELS [DP][NP]

- 21.1 All coaches and support vessel drivers shall complete the [Registration Form](#) no later than **April 12th, 2025**, agreeing to comply with the 29er Class Support Vessel Regulations (Attachment C).
- 21.2 All coaches and support vessel drivers shall confirm registration of their boats and submit the names and sail numbers of the sailors they are supporting at the race office, before the first racing day.
- 21.3 Support vessels shall stay outside areas where boats are racing from the time of the preparatory signal until all boats have finished or retired or the race committee signals a postponement, general recall or abandonment.
- 21.3 If called upon, support vessels shall be required to act as rescue boats.

22. CODE OF CONDUCT [DP][NP]

Competitors and Support persons shall comply with any reasonable request from a regatta official or a member of the Organising Authority. Boats shall follow all instructions given by the OA when returning to shore to avoid overcrowding at the launching ramps.

23. TRASH DISPOSAL

Trash may be placed aboard support and race committee boats.

24. BERTHING [DP][NP]

Boats shall be kept in the dry dock/boat park at all times.

25. RADIO COMMUNICATION [DP][NP]

Except in an emergency, a boat shall neither make radio transmissions while racing nor receive radio communications not available to all boats. This restriction includes mobile telephones.

26. ELECTRONIC EQUIPMENT [DP][NP]

A boat or support team shall not use a drone over the racing area. However, a drone may be flown by a licensed company authorised by the Organising Authority to record video and still imagery exclusively for advertising and promotion.

27. PRIZES

27.1 Prizes will be awarded in the following categories,

- a) 1st to 5th Overall.
- b) 1st female crew (both crew members are female).
- c) 1st youth crew (both members born in 2007 or after).

27.2 Other prizes may be awarded at the discretion of the Organising Authority.

28. RIGHTS TO USE NAMES AND LIKENESSES

Where consent has been given for imagery, competitors grant to the Organising Authority without payment the right in perpetuity to make, use and show any motion pictures, still pictures and live, taped or filmed television of or relating to the event.

29. RISK STATEMENT

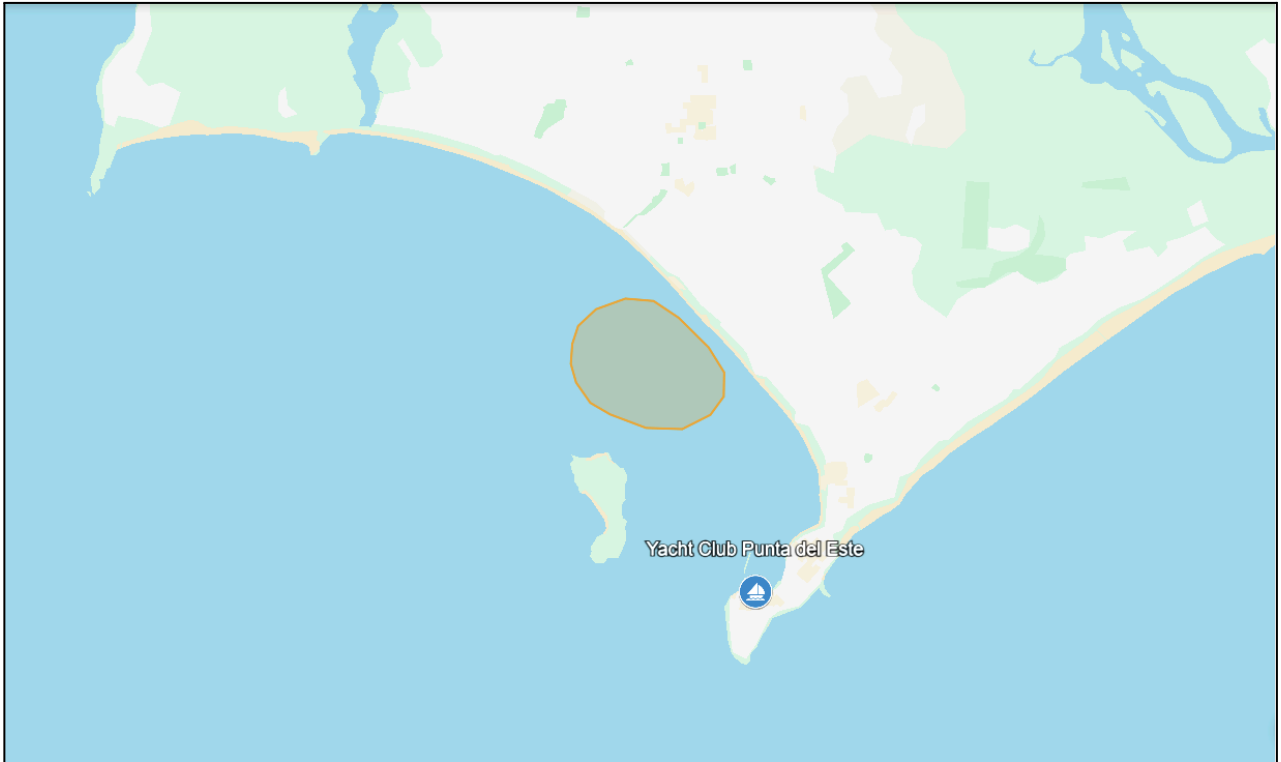
RRS 3 of the Racing Rules of Sailing states: "The responsibility for a boat's decision to participate in a race or to continue racing is hers alone."

Sailing is by its nature an unpredictable sport and therefore inherently involves an element of risk. By taking part in the event, each competitor agrees and acknowledges that:

- 1) They are aware of the inherent element of risk involved in the sport and accept responsibility for the exposure of themselves, their crew and their boat to such inherent risk whilst taking part in the event;
- 2) They are responsible for the safety of themselves, their crew, their boat and their property whether afloat or ashore;
- 3) They accept responsibility for any injury, damage or loss to the extent caused by their own actions or omissions;
- 4) Their boat is in good order, equipped to sail in the event and they are fit to participate;
- 5) The provision of a race management team, patrol boats and other officials and volunteers by the event organiser does not relieve them of their own responsibilities;
- 6) The provision of patrol boat cover is limited to such assistance, particularly in extreme weather conditions, as can be practically provided in the circumstances
- 7) It is their responsibility to familiarise themselves with any risks specific to this venue or this event drawn to their attention in any rules and information produced for the event and to attend any competitor briefing held for this event.

Attachment A

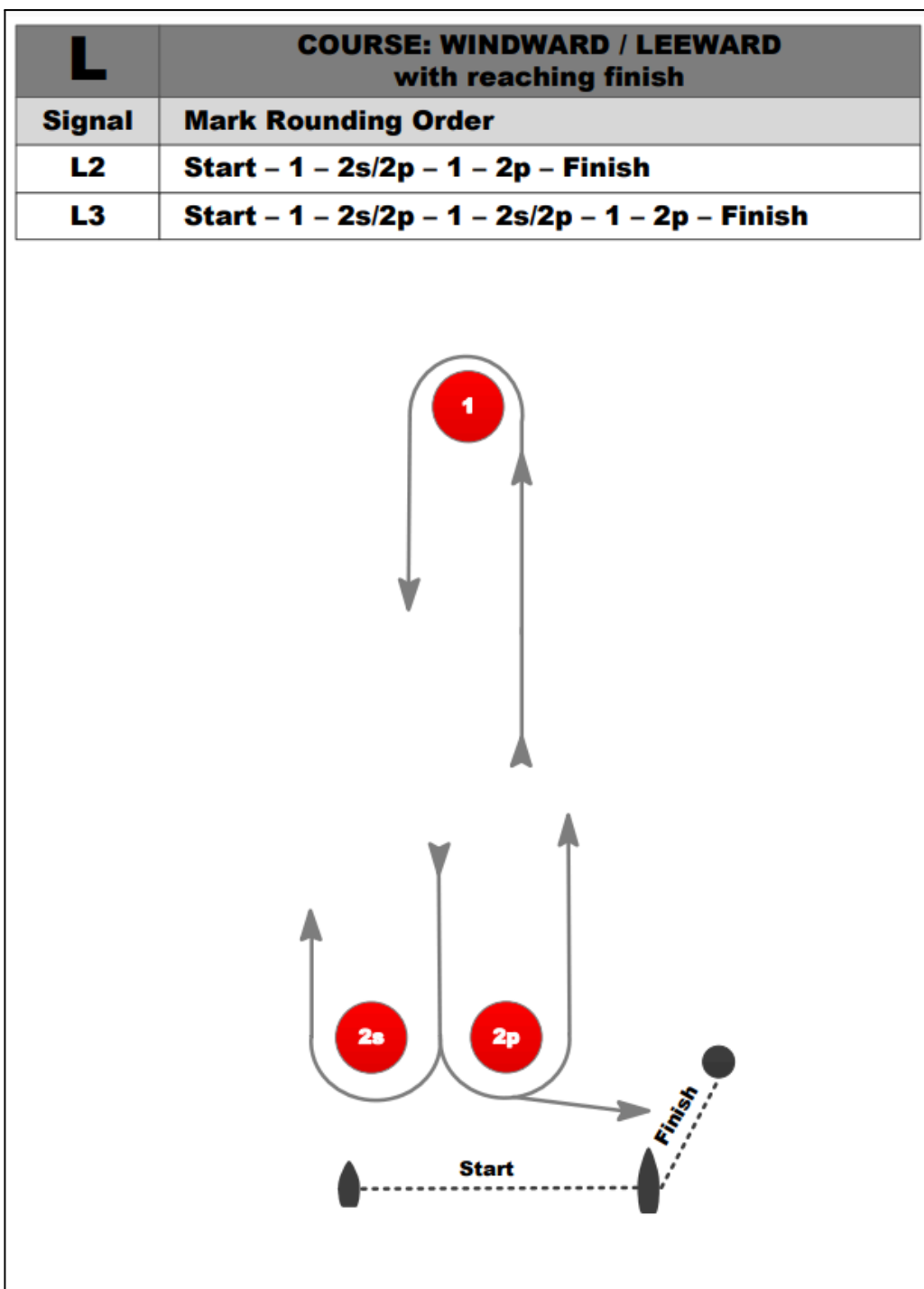
Tentative Racing Area



Attachment B

THE COURSE

L2 format will be used



Attachment C

SUPPORT VESSEL REGULATIONS *29er*

Support Vessels shall carry the following Equipment on board,

- Life jackets / buoyance aids for the driver and all passengers
- Engine kill cord (also known as a safety lanyard or automatic engine immobiliser)
- VHF radio capable of receiving instruction from Safety or Race Committee
- Device for making a sound signal
- Adequate anchor for conditions and depth
- Tow rope

Support Vessel Regulations

- Support Vessels shall be registered with the Organising Authority
- Support Vessels shall follow Race Committee instructions on the designated VHF channel
- **Kill cords shall be worn at all times when the engine is running**
- Life jackets / buoyance aids - it is recommended that they are worn at all times when afloat and **shall** be worn in winds of over 12 knots or when motoring at more than 10 knots
- Support vessels shall not be positioned, except during rescue operations:
 - Closer than 100 metres of any boat racing
 - Within 100 metres of the starting line and its extensions from the warning signal until all boats have left the starting area.
 - Within 100 metres of any mark of the course while boats are in the vicinity of that mark
 - Within 100 metres of the finishing line while boats are finishing
 - In addition, support vessels that are motoring above 5 knots shall remain at least 150 metres from any boat racing